

Fall  
Newsletter  
2020



## Divert your state taxes to support Our Neighbors Farm & Pantry

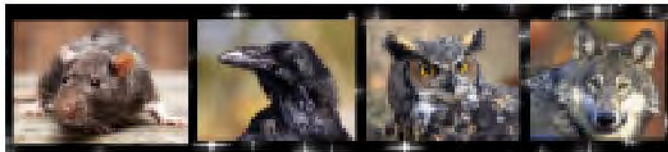
Keep your tax money local through the  
Arizona Tax Credit

1. Pay your state tax
2. Donate the amount of taxes that you paid, to ONF&P (up to \$400 filing single and \$800 joint filing)
3. Provide your tax preparer with your donation receipt from ONF&P OR file online (they will ask for donation towards AZ tax credit)
4. Receive a check with the donated amount from the state (up to \$400 filing single and \$800 joint filing)

**Congratulations, you have supported a  
local nonprofit at NO COST TO YOU!**

For more information go to  
[www.ourneighborsfarm.org](http://www.ourneighborsfarm.org) or  
[www.grahamgreenleetc.org](http://www.grahamgreenleetc.org)

## HALLOWEEN FRIGHT-LESS NIGHT



October 30th between 6 and 9pm, ONF&P will host a Halloween tour in the garden. We think 2020 has been frightening enough so we will stick to a fright-less night of fun!

There are many denizens of the night that have found themselves symbolic of Halloween. We will talk about these symbols as you follow the Halloween path to several stops within the garden. Upon exiting, you will receive a gift from the garden that you can take home to prepare.

***This is a free event for the whole family.***  
We will stagger entry by each group so that we can follow social distancing guidelines.

We ask that you bring a mask if we cannot distance ourselves appropriately.

Stop by and have some fun at 1020 S 10th Ave, behind Safford Methodist Church, at the garden!



## VIRTUAL FIELD TRIPS

Janine Yellowhair Brown and I have been trying to get our personal phones, camera and old video recorder to record our virtual field trips. Most devices have overheated, some have refused to play audio and others have corrupted files.

We finally purchased a small video recorder which plays files appropriately but will overheat if recording above 90 degrees. Once we recorded our first video, I uploaded it to ONF&P YouTube channel and Janine sent the links to teachers. This endeavor has been a lot of trial and error but we've got it now!

Look out Graham County students, we will post a plethora of fun, educational videos that get you up out of your desk to exercise while learning.



## PANTRY DONATIONS

Reed Richins is gearing up to organize the Graham County school food drive. This food drive is our most important food drive of the year. Last year, we received an amazing amount of food which lasted through the summer. It probably would have lasted longer but with COVID-19, we had an extreme lack of grocery store donations so we supplemented with canned goods. We can hardly wait for November to arrive and our pantry shelves to fill.

FMI is doing a food drive in October to distribute to local food pantries. We are excited about this drive and have asked for more canned soups, meats, beans, refried beans, fruit, large sized baby diapers and peanut butter. These are all products that we run out of on a regular basis.

We had an interesting food donation in September. Diane lives in Tucson and her son, Fernando, is taking flying lessons. She called to ask if we would want food for our pantry flown in from Tucson. She thought why not do something good while her son was learning to fly. Of course, we accepted this offer and now Fernando has flown in 4 food donations. Jack, the flight instructor is pictured in the photos.



Thanks to Community Food Bank of Southern Arizona, we were awarded a \$30,000 grant. CFB is a wonderful partner to our organization, they not only support our pantry but they also support our garden and garden education program. Last fiscal year, they donated 265,470 lbs of food to our pantry with a value of \$410,511.



COMMUNITY  
FOOD BANK  
OF SOUTHERN ARIZONA

MEMBER OF  
FEEDING  
AMERICA

We are grateful to all of our supporters and there are many. **WE CANNOT DO THIS WITHOUT ALL OF YOU!**

## VOLUNTEER OF THE MONTH

Tyrel Yazzie is our volunteer of the month. Tyrel volunteers Friday and weekend mornings in the garden. He knows the routine so does not need direction so takes care of daily duties. Otherwise, he spends a lot of his time in the spiral garden, entering data in the computer, caring for the animals and caring for crops. He is very polite, makes good decisions and enjoys working with others. Thank you for your dedication to ONF&P Tyrel, we appreciate you and all that you do for us!



We contacted one of our donors that was randomly chosen to receive a garden gratitude basket and they asked that we give the basket to someone in need. We will make up a basket with a variety of produce we are growing in the garden, as well as flowers and will present it to one of our clients. We will have that photo in our next newsletter that will be emailed to donors, placed on our website and posted on facebook. If you would like our monthly newsletters emailed to you, let us know by email: [ONFandP@gmail.com](mailto:ONFandP@gmail.com)



### SPECIAL RECOGNITION

We are proud to call Janine Yellowhair Brown our farm and education manager. She impacts many lives, most recently being elders and sisters that have been volunteering with her for the past six months. Take a look at how they feel about Janine, as we couldn't have said it any better!

"Thank you so much for all you do. We appreciate you. You are the hardest worker and we look up to you a lot.

"You are so kind to us and everyone around you – you're a great example! See you soon!" ~ Elder Riches

"You are such an amazing person! Your kindness & joy is so contagious! We appreciate all you do for us missionaries! Thank you for everything! You are the sweetest! ♥" ~ Sister Howarth



### BOARD MEMBER SEARCH

We are in search of board members to join our team of dedicated volunteers, working towards bettering the lives of our neighbors. If you are interested in making a difference in our community, please contact Stacey at [ONFandP@gmail.com](mailto:ONFandP@gmail.com). We would love for you to join our team!