



Harvest GRATITUDE Basket!

We know we can't do this without your support and we want to do more to say Thank You!

July will be our first Harvest Basket Thank You. Each month that we are growing and harvesting produce, we will randomly select one donor to receive a Harvest Basket. If you live within a 15 minute or so drive from the garden, we will deliver the basket to your door. If you prefer, you can pick it up at the garden and meet our staff and volunteers. We anxiously look forward to our first Harvest Basket winner!!



Pantry Hours

We launched a pantry survey today, asking our clients to pick the best times for our pantry distributions. We pick-up donated food each Monday and Wednesday from local grocers. Each Tuesday and Thursday we have distribution days. Even though our distribution days will always be Tuesday and Thursday, we are curious if our open hours restrict others in need from participating. This survey should give us a better idea of the times that we should stay open. We will also launch the survey on facebook.

Seniors

We have been delivering food boxes to seniors that do not feel safe leaving their home. We will be doing a small fundraiser on facebook to help curb these expenses. If you are on facebook, please like our page and share our fundraiser.

Garden Education

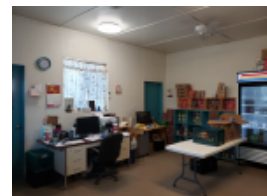
We are anxious to work with school groups but we don't want to put anyone in harms way. Once Safford Unified School District makes the decision on field trips, we will have a game plan ready. We have already reached out to two teachers that participate in our garden education programs and are ready to work on a safety plan when and if it is needed.

Harvest Your Own

Our harvest days are Monday and Friday from 10am-noon. We will pick produce for you and we are selling all produce for \$2/lb. It's hard to pass up a deal like this!!

Pantry Reorganization

Staff and volunteers are spending a bit of time reorganizing what was once the pantry store where clients could choose their own food. Since we are boxing all distributions, we have moved tables and shelves to the pantry store so we can more easily stock boxes. We pushed desks against the wall which created much more space to work. It was a natural progression to begin work on the storeroom, sorting through stored items that no longer served us and reorganizing canned goods, packaged goods, and cleaning supplies so that they are more easily accessible. Dana Larchick has been the driving force behind most of this reorganization and we are happy she stepped in to help. Thanks Dana!



New Facebook Page in Graham County

ONF&P has launched a new facebook page, share it with your friends.

Check out [Graham County-Finding Food for Those in Need](#)